



*The Signature of Quality*

**FEDERAL INDUSTRIES**

A Standex Company

215 Federal Avenue  
Belleville, Wisconsin 53508-9201

**Phone:** 800-356-4206

**Fax:** 608-424-3234

**Email:** Geninfo@Federalind.com

**Website:** Federalind.com

Project Name: \_\_\_\_\_

Item #: \_\_\_\_\_

Model #: \_\_\_\_\_ Qty: \_\_\_\_\_

Approval: \_\_\_\_\_

AIA #

SIS #

**VISION SERIES - Curved End Self-Serve Non-Refrigerated Case - 78"**

Designed with impulse sales in mind. Get maximum return from an attention-grabbing merchandiser and increase profits.



Model VNSS3678C  
Shown with Options

MODEL	DIMENSIONS (Includes End Panels)
<input type="checkbox"/> VNSS3678C	24 x 33 x 78 (in) 610 x 838 x 1981 (mm)
<input type="checkbox"/> VNSS3678C	36 x 33 x 78 (in) 914 x 838 x 1981 (mm)
<input type="checkbox"/> VNSS4878C	47.25 x 33 x 78 (in) 1200 x 838 x 1981 (mm)
<input type="checkbox"/> VNSS6078C	59.25 x 33 x 78 (in) 1505 x 838 x 1981 (mm)
<input type="checkbox"/> VNSS7278C	71.25 x 33 x 78 (in) 1810 x 838 x 1981 (mm)

**STANDARD FEATURES**

**Model Features**

- Black interior including shelves
- Stainless steel display deck
- Tempered glass ends
- Black powder coated base frame
- Moisture resistant end panel construction
- Choice of standard colors on lower millwork panel
- Black trim
- Adjustable leg levelers
- Cord & plug
- Matches profile of the VRSS & VHSS models

**Shelving**

- Four tiers of adjustable black metal shelves with price tag molding. Shelves can be flat or tilted down at 10°.

**Lighting**

- 3500K LED top light

**Agency Approvals**

- UL, C-UL, and UL Sanitation listed to NSF-2

**OPTIONAL ACCESSORIES**

- |   |   |
|---|---|
| <input type="checkbox"/> 3500K LED lights below shelves               | <input type="checkbox"/> Clear or reflective sliding rear doors (solid hinged on 36" cases) |
| <input type="checkbox"/> White interior (including shelves)           | <input type="checkbox"/> Front cart bumper  |
| <input type="checkbox"/> Stainless steel interior (including shelves) | <input type="checkbox"/> Recessed casters   |
| <input type="checkbox"/> Stainless steel shelves in lieu of black     | <input type="checkbox"/> 2 1/2" or 4" casters   |
| <input type="checkbox"/> Deli meat pegs                               | <input type="checkbox"/> Legs, 6"   |
| <input type="checkbox"/> Additional lighted 3500K LED shelf           | <input type="checkbox"/> Seismic legs   |
| <input type="checkbox"/> Special exterior laminate finish             | <input type="checkbox"/> Skirt w/4" casters or legs   |
| <input type="checkbox"/> Graphics Package                             | <input type="checkbox"/> Joining kit for continuous line-ups                                |
| <input type="checkbox"/> Stainless steel exterior finish              | <input type="checkbox"/> Front wire display basket  |
| <input type="checkbox"/> Solid right/left end panels (mirrored)       |   |
| <input type="checkbox"/> Reflective end glass                         |   |

\*Additional options available on the website and price list.



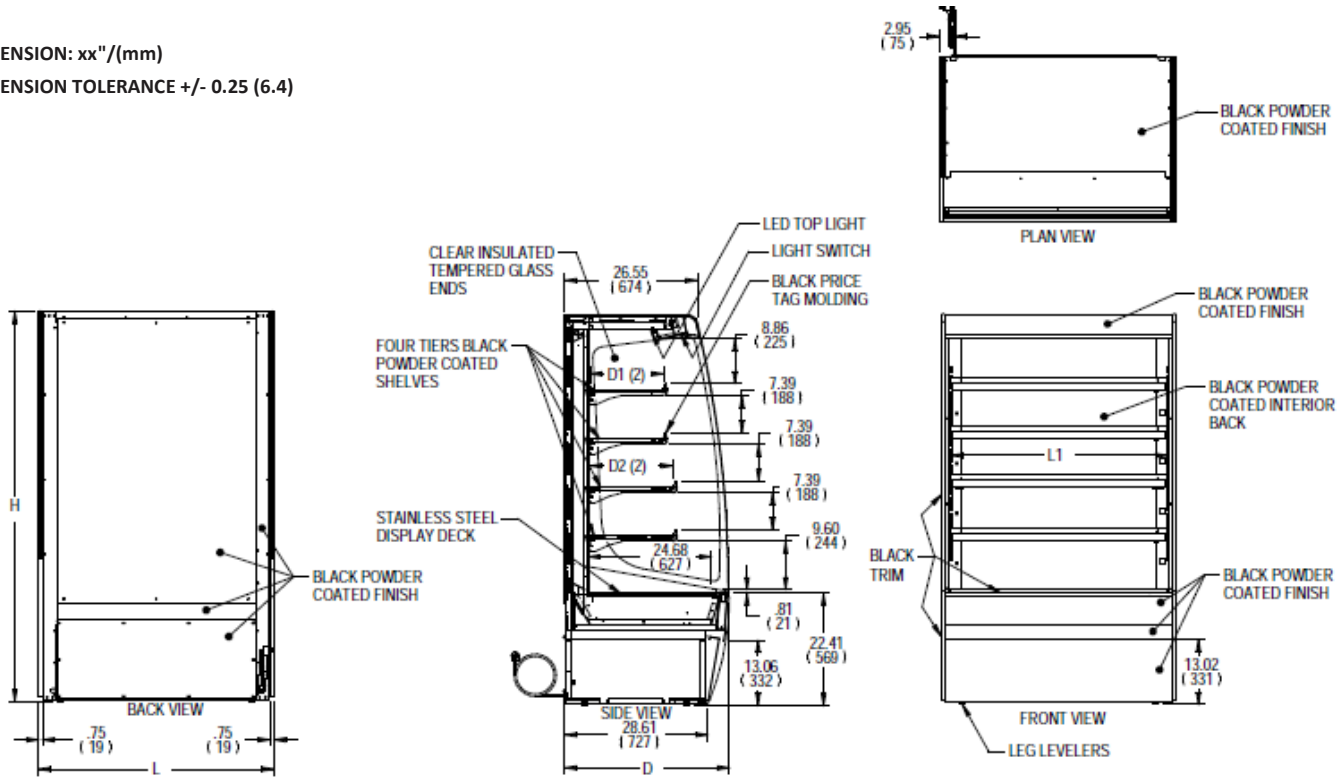
**WARRANTY\***  
One year Parts and Labor  
2nd thru 5th year part only  
service compressor  
(U.S.A. and Canada)

Note: Information is subject to change at any time. Visit [www.federalind.com](http://www.federalind.com) for the most current specs.

AIA #	<b>VISION SERIES - Curved End Self-Serve Non-Refrigerated Case - 78"</b>
SIS #	<b>Product Specifications</b>

Zone	Intended Product To Be Displayed
All	Non-Refrigerated Package Products

DIMENSION: xx"/(mm)  
 DIMENSION TOLERANCE +/- 0.25 (6.4)



E3978-1 REV A

MODEL	DIMENSIONS			SHELVING			INTERIOR VOLUME CU FT	STANDARD CONNECTION CORD & PLUG			SHIP WEIGHT LBS KILO	
	L	D	H	# OF TIERS	L1	D1		D2	2 WIRE + GROUND			NEMA CORD & PLUG
	in	in	in		in	in		in	120/60/1			
	mm	mm	mm		mm	mm		mm	AMPS	MAX FUSE SIZE		
VNSS2478C	24	33	78	4	20.25	14.634	16.634	12.64	1.5	15	NEMA 5-15P	500
	610	838	1981		514	372	423					227
VNSS3678C	36	33	78	4	32.25	14.634	16.634	19.47	1.5	15	NEMA 5-15P	655
	914	838	1981		819	372	423					297
VNSS4878C	47.25	33	78	4	43.25	14.634	16.634	25.74	1.5	15	NEMA 5-15P	735
	1200	838	1981		1099	372	423					333
VNSS6078C	59.25	33	78	4	55.25	14.634	16.634	32.58	2.0	15	NEMA 5-15P	940
	1505	838	1981		1403	372	423					426
VNSS7278C	71.25	33	78	4	67.25	14.634	16.634	39.42	2.0	15	NEMA 5-15P	995
	1810	838	1981		1708	372	423					451

• Due to continuing engineering improvements, specifications are subject to change without notice



**FEDERAL INDUSTRIES**  
 A Standex Company  
 215 Federal Avenue Belleville, Wisconsin 53508-9201

**Phone:** 800-356-4206  
**Fax:** 608-424-3234  
**Email:** Geninfo@Federalind.com  
**Website:** Federalind.com