



The Signature of Quality

Email: Geninfo@Federalind.com Website: Federalind.com

FEDERAL INDUSTRIES

A Standex Company

215 Federal Avenue
Belleville, Wisconsin
53508-9201

Phone: 608-624-5234
Fax: 608-624-5206

Project #: _____
Item #: _____
Model #: _____ Qty: _____
Approval: _____

AIA #

SIS #

Refrigerated Self-Serve Slim-Line High Profile Specialty Merc

r – 60”H

handise

X 24” D

Designed with impulse sales in mind. Get maximum return from an attention-grabbing merchandiser and increase profits.



Model RSSL478SC Shown

MODEL	DIMENSIONS (Includes End Panels)
<input type="checkbox"/> RSSL360SC	36 x 24 x 60(in) 914 x 610 x 1530 (mm)
<input type="checkbox"/> RSSL460SC	47.25 1200 x 24 x 60 (in)
<input type="checkbox"/> RSSL560SC	59.25 x 24 x 60 (in) 1505 x 610 x 1530 (mm)
<input type="checkbox"/> RSSL660SC	71.25 x 24 x 60 (in) 1810 x 607 x 1530 (mm)

STANDARD FEATURES

Model Features

- Welded powder coated steel base fabrication
- Choice of six standard laminates on exterior
- Black metal front grill and galvanized steel back
- Silver Trim
- Stainless steel display deck, glass and black interior ends, black interior back panel
- Moisture resistant end panel construction with field replaceable tempered thermo-pane glass
- Front air intake and discharge
- Energy saving night curtain
- Cord and plug, self-contained only
- Adjustable Leg Levelers

Refrigeration

- Electronic temperature control with on demand defrost
- PTC Condensate heater provided for a totally self-contained system (3.3°-4.4°C)
Note: Case temperature will vary if the air curtain is disrupted.
- Insulated with high-density urethane foam
- Thermometer
- Refrigeration controls maintain 38°-40°F
- R449a refrigerant (R448a/R449a in Remote Applications)

Shelving

- Two tiers of adjustable black metal shelves with price tag molding. Shelves can be flat or slanted downwards at 10 °

Lighting

- 3500K LED top light
- DLC certified, IP 65 rated

Agency Approvals

- UL, C-UL and UL Sanitation listed to NSF-7, Type I conditions
- DOE 2017 compliant

OPTIONAL ACCESSORIES

- Special exterior laminate finish
- Stainless steel exterior finish
- Black or white trim
- White interior (including shelving)
- Additional Lighted (LED) shelf
- Reflective end glass
- Deli Meat Pegs
- Security Night - removable
- LED Lights below shelves
- 2 ½" (63.5 mm) Casters (Self Contained models Only)
- Legs 6" (152mm)
- Skirt with casters or legs
- Condensate pump
- Condensate Evaporator Assembly (Field Install) (Separate 120V, Circuit Required) (Remote Only)
- Remote refrigeration with condensate pump (EEV included)

*Additional options available on the website and price list.






WARRANTY*
One year Parts and Labor
2nd thru 5th year part only
service compressor
(U.S.A. and Canada)

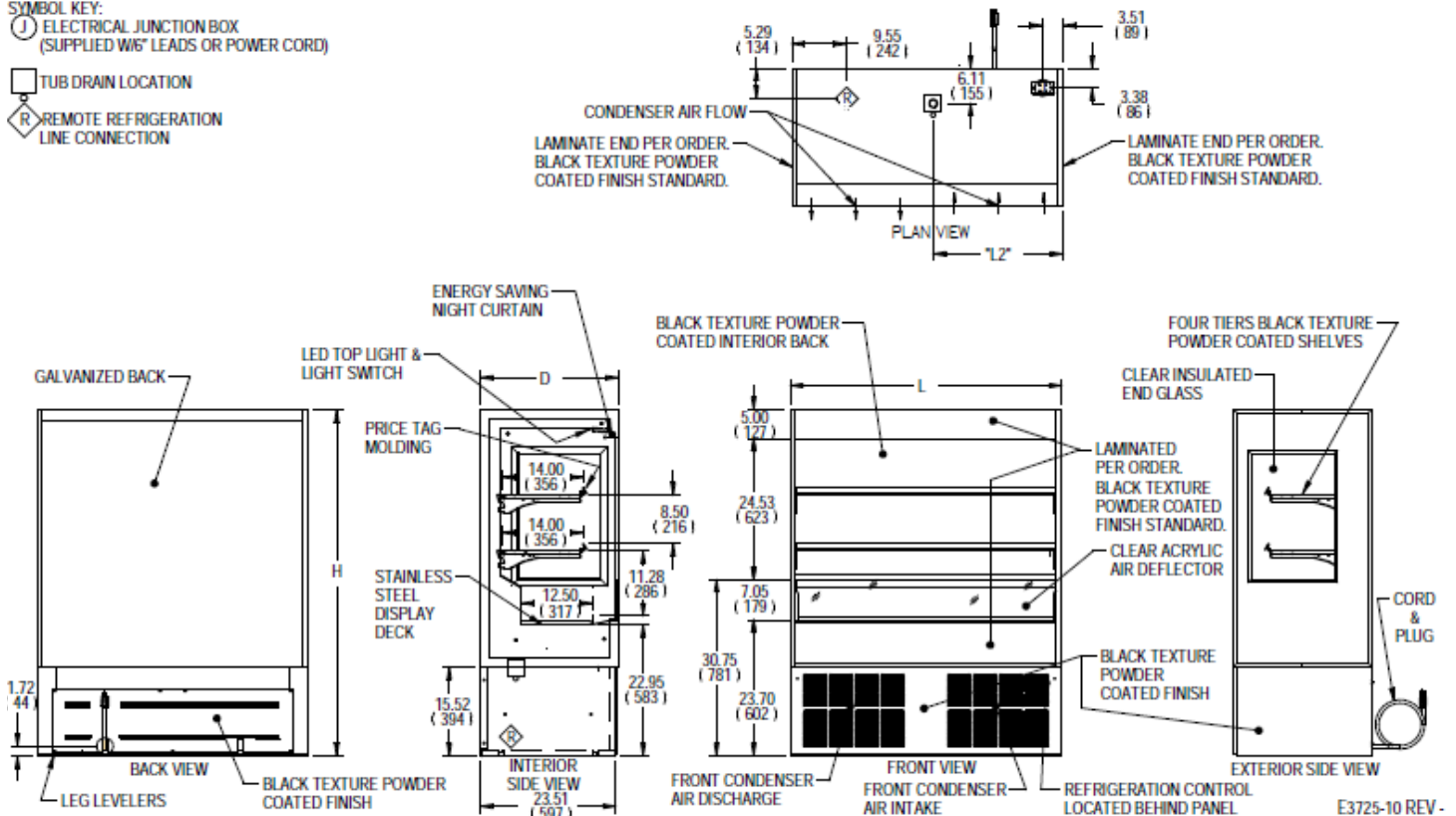
Note: Information is subject to change at any time. Visit www.federalind.com for the most current specs.

AIA #	Refrigerated Self-Serve Slim-Line High Profile Specialty Merchandiser – 60”H X 24” D
SIS #	Product Specifications

Intended Environment: Type I (Self Contained) - Designed to operate in maximum ambient conditions of 75°F (24°C) and 55% relative humidity. Type II (Remote) - Designed to operate in maximum ambient conditions of 80°F (24°C) and 55% relative humidity		
Zone	Intended Product To Be Displayed	Avg prod temp °F / °C
All	Packaged Refrigerated Products	38°F / (3.3°C)

DIMENSION: xx"/(mm)
DIMENSION TOLERANCE +/- 0.25 (6.4)

- SYMBOL KEY:**
 **ELECTRICAL JUNCTION BOX (SUPPLIED W/6' LEADS OR POWER CORD)**
 **TUB DRAIN LOCATION**
 **REMOTE REFRIGERATION LINE CONNECTION**



MODEL	DIMENSION				TUB DRAIN		SHELVING		INTERIOR VOLUME CU FT	STANDARD NEMA CORD & PLUG				REFRIGERANT	C.U. HP	SHIP WEIGHT LBS / KILO	REMOTE				
	L	D	H	L2	# OF TIERS	D	L	PERMANENT CONNECT				REFRIGERANT	BTU'S @+20°				SHIP WEIGHT LBS / KILO				
	2-WIRE + GROUND				2-WIRE + GROUND					2-WIRE + GROUND											
	ELECTRICAL	AMPS	MAX FUSE SIZE	NEMA CORD & PLUG	ELECTRICAL	AMPS	MAX FUSE SIZE	ELECTRICAL		AMPS	ELECTRICAL							MAX FUSE SIZE			
RSSL360	36.00	24.00	60.25	11.63	2	14.00	34.00	11.07	120/60/1	16.0	20			NEMA 5-20P	R449a	3/4		795 LBS 361 KILO	6.4	120/60/1	15
	914	610	1530	295		356	864														
RSSL460	47.25	24.00	60.25	22.63	2	14.00	45.00	14.50	120/60/1	16.0	20	NEMA 5-20P	R449a	3/4	885 LBS 401 KILO	7.6	120/60/1	15	R449a	7500	800 LBS 363 KILO
	1200	610	1530	575		356	1143														
RSSL560	59.25	24.00	60.25	29.13	2	14.00	57.00	18.22	208-240/60/1	15.0	30	NEMA 6-20P	R449a	1	1120 LBS 508 KILO	7.3	208-240/60/1	15	R449a	9000	1015 LBS 460 KILO
	1505	610	1530	740		356	1448														
RSSL660	71.25	24.00	60.25	35.13	2	14.00	69.00	21.91	208-240/60/1	15.0	30	NEMA 6-20P	R449a	1	1180 LBS 535 KILO	7.3	208-240/60/1	15	R449a	10500	1075 LBS 488 KILO
	1810	610	1530	892		356	1753														

- Due to continuing engineering improvements, specifications are subject to change without notice.
- Case temperature will vary if the air curtain is disrupted.



FEDERAL INDUSTRIES
 A Standex Company
 215 Federal Avenue Belleville, Wisconsin 53508-9201

Phone: 800-356-4206
Fax: 608-424-3234
Email: Geninfo@Federalind.com
Website: Federalind.com