



The Signature of Quality

FEDERAL INDUSTRIES

A Standex Company

215 Federal Avenue Belleville Wisconsin 53508-9201

Phone: 800-356-4206

Fax: 608-424-3234

Email: Geninfo@Federalind.com

Website: Federalind.com

Project Name: _____

Item #: _____

Model #: _____ Qty: _____

Approval: _____

AIA #

SIS #

Italian Glass Refrigerated Counter Display Case (Drop-In)

Ideal for both Bakery & Deli Merchandising

Designed for customers looking for rich, up-scale Italian styling for maximum visual appeal that will drive product sales.



Model ITR4826 Shown
*Counter Not Provided

MODEL	DIMENSIONS (Includes End Panels)
<input type="checkbox"/> ITR3626	36 x 30 x 42 (in) 914 x 762 x 1067 (mm)
<input type="checkbox"/> ITR4826	48 x 30 x 42 (in) 1219 x 762 x 1067 (mm)
<input type="checkbox"/> ITR6026	60 x 30 x 42 (in) 1524 x 762 x 1067 (mm)
<input type="checkbox"/> ITR3634	36 x 30 x 50 (in) 914 x 762 x 1270 (mm)
<input type="checkbox"/> ITR4834	48 x 30 x 50 (in) 1219 x 762 x 1270 (mm)
<input type="checkbox"/> ITR6034	60 x 30 x 50 (in) 1524 x 762 x 1270 (mm)

STANDARD FEATURES

Model Features

- Stainless steel interior
- All tempered thermo-pane glass construction
- Removable sliding glass rear doors
- Rear air intake and discharge

Refrigeration

- Electronic temperature control with on demand defrost
- PTC Condensate evaporator provided for a totally self-contained system
- Easily accessible light switch, power switch, and electronic temperature control
- Average product temperature of 38°F (3.3°C) to 40°F (4.4°C)
- Proper ventilation of counter is required for proper performance
- Rear air intake and discharge
- R513a Refrigerant

Shelving

- Adjustable tempered glass shelves. Shelves are adjustable up and down and can be tilted in two positions (0°/ 5 angle). 34" (864mm) models have three tiers of shelves; 26" (660mm) models have two tiers of shelves

Lighting

- 3500K LED top light and shelf lights
- DLC Certified, IP66 rated

Agency Approvals

- UL, C-UL, and UL Sanitation Listed to NSF-7, Type II conditions
- DOE 2017 Compliant

OPTIONAL ACCESSORIES

- | | |
|---|---|
| <input type="checkbox"/> Stainless Steel Shelving | <input type="checkbox"/> Joining Kit for Continuous Line-ups |
| <input type="checkbox"/> Condensate Pump | <input type="checkbox"/> Remote Condensator (EEV Included) (R449a in Remote Applications) |
| <input type="checkbox"/> Cord & Plug (SC Models Only) | |
| <input type="checkbox"/> Reflective Rear Doors | |
| <input type="checkbox"/> Reflective Ends | |

*Additional options available on the website and price list.



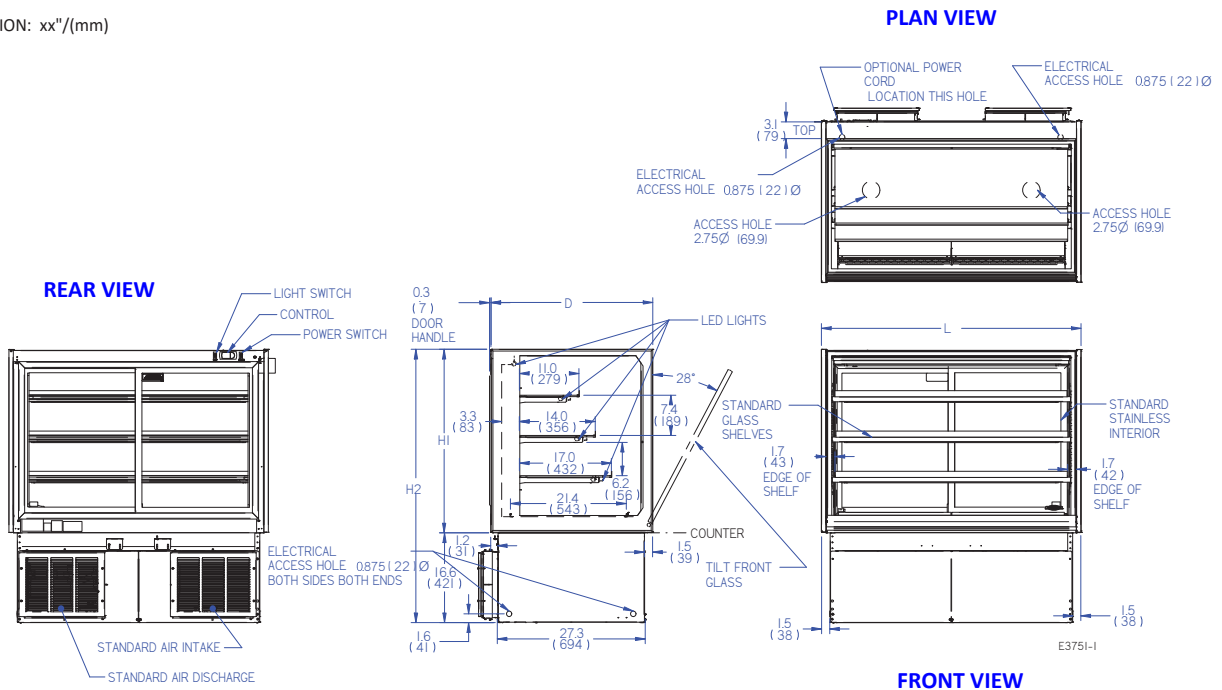
WARRANTY*
One year Parts and Labor
2nd thru 5th year part only
service compressor
(U.S.A. and Canada)

Note: Information is subject to change at any time. Visit www.federalind.com For the most current specs.

AIA #	<h1>Italian Glass Refrigerated Counter Display Case (Drop-In)</h1>
SIS #	Product Specifications

Intended Environment: Type II - Designed to operate in maximum ambient conditions of 80°F (27°C) and 55% relative humidity unless noted otherwise in system information below.		
Zone	Intended product to be displayed	Avg prod temp °F / °C
All	Packaged refrigerated products	38°F / (3.3°C)

DIMENSION: xx"/(mm)



DIMENSION TOLERANCE +/-0.19 (4.8)

MODEL	DIMENSIONS					SHIPPING WHT		SELF-CONTAINED Permanently Connected			OPTIONAL NEMA PLUG	REMOTE		BTU @ 20°F	COUNTER CUTOUT		
	L	D	H1	H2	UNITS	LBS	KILO	VOLTAGE	AMPS	VOLTAGE		AMPS	L		W	UNITS	
ITR3626	36	30	26	42	in.	400	182	120/60/1	MAX FUSE 20	NEMA 5-15P	120/60/1	MAX FUSE 15	3400	33.4	27.7	in.	
	914	762	661	1067	mm.									848	704	mm.	
ITR4826	48	30	26	42	in.	450	204	120/60/1	MAX FUSE 20	NEMA 5-15P	120/60/1	MAX FUSE 15	3800	45.4	27.7	in.	
	1219	762	661	1067	mm.									1153	704	mm.	
ITR6026	60	30	26	42	in.	550	250	120/60/1	MAX FUSE 20	NEMA 5-15P	120/60/1	MAX FUSE 15	4200	57.4	27.7	in.	
	1524	762	661	1067	mm.									1458	704	mm.	
ITR3634	36	30	34	50	in.	450	204	120/60/1	MAX FUSE 20	NEMA 5-15P	120/60/1	MAX FUSE 15	3400	33.4	27.7	in.	
	914	762	864	1270	mm.									848	704	mm.	
ITR4834	48	30	34	50	in.	530	240	120/60/1	MAX FUSE 20	NEMA 5-15P	120/60/1	MAX FUSE 15	3800	45.4	27.7	in.	
	1219	762	864	1270	mm.									1153	704	mm.	
ITR6034	60	30	34	50	in.	610	277	120/60/1	MAX FUSE 20	NEMA 5-15P	120/60/1	MAX FUSE 15	4200	57.4	27.7	in.	
	1524	762	864	1270	mm.									1458	704	mm.	

- Refrigerated cases are designed to operate in a maximum of 80°F (27°C) ambient and 55% relative humidity.
- Due to continuing engineering improvements, specifications are subject to change without notice.
- Counter must have adequate ventilation for proper case performance.



FEDERAL INDUSTRIES
 A Standex Company
 215 Federal Avenue, Belleville, Wisconsin 53508-9201

Phone: 800-356-4206
Fax: 608-424-3234
Email: Geninfo@Federalind.com
Website: Federalind.com